

## Searching for [Free Radicals@luxc.tech](mailto:info@luxc.tech)

LuxC [look-see] is a Danish Perception company.

We build collision avoidance, surveillance and navigation solutions using Perception technology for the „last mile“ (1 m → 1 km) around the sea vessel. We are focused on saving lives in the marine sector and our technology helps both Humans and Computers (AI) to manoeuvre and navigate safely.

We are passionate about High-Tech Marine Safety Solutions!

We are a software company dedicated to Robotic Perception. Our software fuses the input from many hardware sensors, such as Lidars, cameras, IMUs, GPS sensors etc. into “an image of reality in the mind of a computer”. This **Perception** can be used by Human professional to make a 360° understanding of their surroundings and do intelligent decisions, or help computers (AI) to make Autonomous decisions.

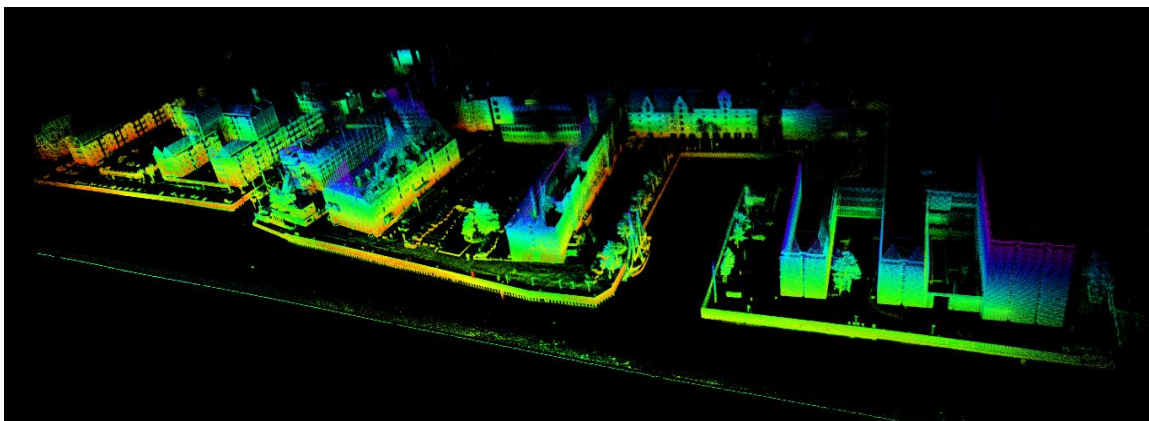
We believe that accidents at work can be minimized when autonomous systems support human decisions.

LuxC is located at FutureBox:, the Startup incubator of the DTU Science Park in Copenhagen, Denmark. It is **required** that the candidate has a working permit for Denmark (or EU) and that they are on-site full time.

The current LuxC team is an international, young and enthusiastic team who loves technology. We are looking for a person who is self-disciplined, technically skilled, an emphatic individual, who can thrive in intellectually challenging environments.

### What's next?

- (a) Do you recognize yourself in this description?
- (b) Contact LuxC with a CV & Cover letter on [info@luxc.tech](mailto:info@luxc.tech)



A 3D Point Cloud map of Copenhagen Canals, made using libLuxC. This is a >5 million points representation of CPH with an incredibly accuracy.